

Camping Flamingo



Le Grau du Roi, Camargue, France, 5m
150 beds, from EUR 28.00

Camping Flamingo in the Camargue is located directly on the beach, just a few kilometres from the Mediterranean town of Le Grau du Roi. Popular excursion destinations include Arles, Montpellier and Nîmes. Spend relaxing days here at the beach camp and benefit from the extensive camp and beach programme, such as the aqua park with slides.

Details

rooms & facilities

accommodation

Total 150 spaces to sleep
 15 tents with 2 mattresses (for accompanying persons, with electricity and light (15m²))
 30 tents with 4 mattresses (with air beds, 15m²)

bedding

towels - please bring your own
 sleeping bags - please bring your own
 fitted sheets - please bring your own
 pillows - please bring your own

facilities

2 common rooms (24 m²) - Group pavilions, incl. electricity and lighting

furnishings & equipment

kitchen equipment

1 Kitchen (Kitchen tent made of flame-retardant PVC with: Light, sockets, refrigerators, stool gas cooker, 3-4 table gas cookers, gastro roaster with grill and frying function, cooking materials, handcart)

sanitary facilities

1 washrooms - large sanitary building directly at the camp

Features

Flat terrain/playing field (with benches and tables)
 table tennis
 1 Swimming pool (aquapark with slides)
 Internet/WLAN (in the reception area, free of charge)

Activities

shopping facility	(3.5 km)
restaurant	in Le Grau du Roi
lake or river	- the camp is located directly by the sea
other activities	- Popular excursion destinations nearby: Arles (53km), Montpellier (38km), Nîmes (55km) next to the house - aquapark with slides - beach volleyball, windsurfing, swimming

Costs

all information without guarantee

Season from end June to beginning September

Groups up to 150 people	Price per person and night
	from EUR 28.00
	Catering possible on request.

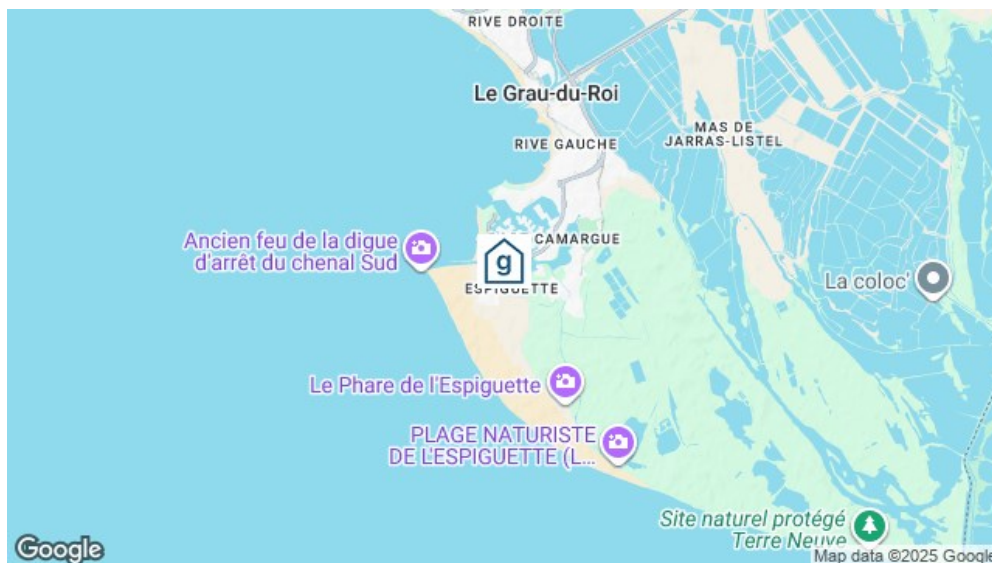
house closed from beginning September to end June

minimum occupation	2 nights 25 people
---------------------------	-----------------------

other costs	Tourist tax: not included House cleaning: not included Energy costs: not included
--------------------	---

Location

location of the house	- near lake / river (ocean) - Direct access by car
------------------------------	---



Reachability

nearest town/village	Le Grau du Roi
by car/by coach	by car - driving up to the house possible by private coach - driving up to the house possible (Arrival and departure can be organised with a long-distance coach.)

Inquire now without obligation
https://www.gruppenhaus.ch/en/inquiry_form/camping/flamingo/1494

gruppenhaus.ch
Samstagerstrasse 20, 8832 Wollerau

+41 62 961 3334
vermittlung@gruppenhaus.ch

20/08/2025 The accuracy of information provided in this document, can not be guarantee.