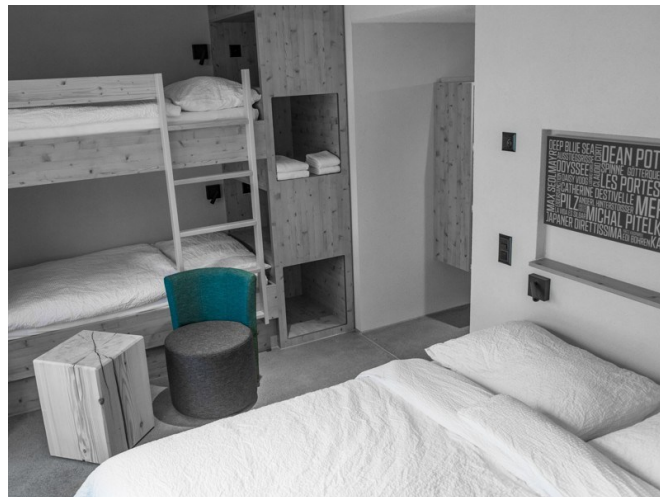


Group accommodation Eiger Lodge «Chic»



Grindelwald, Bernese Oberland, Switzerland, 1000m

114 beds, from CHF 75.00

The Eiger Lodge "Chic" has various double and family rooms (up to 4 people) with en-suite bathrooms. After an exciting day in the Jungfrau region, you can enjoy a refreshing drink in the in-house bar. The bar is open at weekends. Some rooms are wheelchair accessible. Admission to the indoor swimming pool in the sports centre is free of charge. For sports enthusiasts - what more could you want...? INFO The neighbouring 'Easy' building will be renovated from April to November 2025. Increased noise emissions and restrictions are to be expected during the day. Reception, breakfast and the Grill Bar will be open as usual. Thank you for your understanding!

Details

rooms & facilities

accommodation

Total 114 spaces to sleep
33 rooms with 2 beds and bathroom with shower, sink and WC
12 rooms with 4 beds and bathroom with shower, sink and WC
9 bedrooms are barrier-free.

bedding

bed linen - available
towels - available

facilities

1 bar - at the weekend
2 common rooms - 30-80 peoples
1 cloakroom
1 ski room - bikes

furnishings & equipment

kitchen equipment

not suitable for self-catering

Features

elevator
Beamer (for hire)
TV (in the room)
Internet/WLAN
table tennis (in summer)
Dart
table football
Billiard
Campfire site

Activities

skiing resort

Grindelwald - Wengen

The world-famous Swiss mountain chain Eiger, Mönch and Junfrau offer 155 km of pure fun.
You can also see the Lauberhorn-Worldcup run.

Altitude valley:	1034m
Altitude mountain:	2472m
Number of lifts:	27
Ski runs:	155km

outdoor swimming-pool

indoor swimming-pool

cinema

in the village/city zentrum (15 minutes walking dinstance)

skating rink

crosscountry skiing

in the Grund (2 minutes walking dinstance)

minigolf

in the village/city zentrum (15 minutes walking dinstance)

restaurant

(2 minutes walking dinstance)

sauna

in the Sportzentrum (15 minutes walking dinstance)

skilift

Männlichenbahn/Jungfraubahn

tennis court

(15 minutes walking dinstance)

lake or river

Lütschine

other activities

- sledging
- curling

Exkursionen

Microsoft.AspNetCore.Mvc.Localization.LocalizedHtmlString:
Microsoft.AspNetCore.Mvc.Localization.LocalizedHtmlString

Costs

all information without guarantee

all year

Groups up to 114 persons

Prices per person and night

from CHF 75.00

We would be pleased to send you a non-binding offer on request.

minimum occupation

Winter: Weekend 2 nights (Fri - Sun)

Christmas/New Year: 5 nights

New Year's Eve, last week of December and first week of January: 5 nights

other costs

Communal taxes: CHF 4.75/adult (from the age of 16); CHF 3.70/youth (12 to 16 years), per person/night

Electricity/heating/rubbish: included

Cleaning of the house: included

Location

location of the house

- central
- near lake / river
- in the mountains
- close to skiing area
- directly at ski run
- Shops close by
- Direct access by car - all year



Reachability

public transport

by train to Grindelwald Terminal - 2 minutes walking distance to the house

by bus to Grindelwald Terminal/Grund - 2 minutes walking distance to the house

by car/by coach

by car - driving up to the house possible - 30 parking spaces

by private coach - driving up to the house possible - 1 parking space (Additional parking spaces 200 m away)

Inquire now without obligation

https://www.gruppenhaus.ch/en/inquiry_form/group_accommodation/eiger_lodge_chic/345

gruppenhaus.ch
Samstagernstrasse 20, 8832 Wollerau

+41 62 961 3334
vermittlung@gruppenhaus.ch

30/04/2025 The accuracy of information provided in this document, can not be guarantee.